

# donate

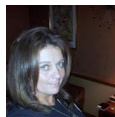
**We need your support to help us to provide the much needed specialist equipment and activities for the children and young people with disabilities or life limiting illnesses.**

Thank you to all our donors throughout 2017 for your kind generosity. Enquiries are always welcome from any organisation or individual who would like to support our charity or anyone who feels that their child

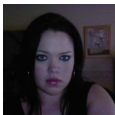
**Katie Holt**  
Trustee



**Sharon Sargent**  
Trustee



**Lindsey Aldred**  
Fundraising Officer



**Sally Hart**  
Fundraising Officer



**Stephanie Thomas**  
Apprentice



See our Facebook or Website for our Events.  
<https://www.blessingsindisguise.co.uk/events>

## Blessing in Disguise

Suite F6A Enterprise House  
Wigan Enterprise Park  
Seaman Way  
Wigan

Phone: 01942 316113  
E-mail: [Blessingsindisguisecharity@gmail.com](mailto:Blessingsindisguisecharity@gmail.com)  
Web: [www.blessingsindisguise.co.uk](http://www.blessingsindisguise.co.uk)

“Creating positive changes to improve life’s misfortunes, everyone deserves a Blessing in Disguise”

February

**Blessing in Disguise**



**February 2018**

Registered Charity No: 1161139  
Company Registration No: 8790053  
Member of SFEDI & IOEE  
Fellow Member of S.S.E.

## ***Everyone deserves a blessing in disguise....***

Blessing in Disguise Children's Charity is a not-for-profit organisation that enriches the lives of disadvantaged children and young people throughout the UK.

Blessing in Disguise creates a positive focus on enabling freedom to enjoy treasured memories to share with family and loved ones and provides a range of life enhancing experiences helping to improve the quality of life for children and young people with disabilities or life limiting illnesses.



*Blessing  
In Disguise*

We are a socially responsible organisation, providing much needed support to many children, young adults and their families/carers by providing, free of charge, a range of life enhancing equipment, activities and social/ recreational opportunities for the whole family.

Through personal experience, we know that it can often be difficult on other family members, who perhaps unfortunately miss out, but we will endeavour to encourage them to achieve positive changes. With the right funding we have the potential to increase the number of vulnerable people that we support each year, providing much needed equipment to more families across the UK and making a significant difference.

## **What we do...**

- Provide much needed support for children and young people, their families/careers
- Provide Free Specialist Equipment
- Exclusive & Inclusive organized Events & Fun Activities
- Fundraising
- Community Involvement & Partnership working
- Create Treasured memories
- Networking Coffee mornings



### **Run for Blessing in Disguise**

**18th March 2018 at 13.00**

**The Wigan10k organisers are pleased to announce the #runwiganfestival will incorporate the Wigan5K, Wigan Half Marathon and Family Run.**

**The Run Wigan Festival Family Run is a fun run and as such 'no chip timing' is to be used. All children will be allocated a race number which can be collected on the day of the race from the Race Information Point in the town centre between 11am and 12.30pm. All children taking part will receive a Joining Jack medal and a bottle of water on completion of the run. Parents/ Guardians can run free with the children.**

**For more information call us on: 01942 316113**

Benjamin is 11 years old and suffers from Sturge-Weber Syndrome (rare neurological disorder present at birth). He requires a specialist seating system helping him to hold correct posture, due to his disabilities Benjamin cannot hold his head up or maintain good posture and he is permanently in a wheelchair.



Custom Moulded and Symmetrical Bean Bag has been designed and developed by SOS as a simple yet effective postural support for use by disabled children and young adults. The unique patented design of the 'P' Pod combines a symmetrical or custom moulded support within the simplicity of a conventional Bean Bag base.

With your kind support, Blessing in Disguise have provided the following equipment/services:

Various equipment for the home; various bedroom furniture; specialist beds & bedding; various safety equipment; special needs buggies & accessories & high chairs; Easter eggs & toys; dark dens & sensory equipment; communication aids; wheelchair covers & foot muffs; ICE badges, lanyard and wristbands; safety aids & monitoring equipment for autistic children with epilepsy; 'Swim-Ability' disabled swim therapy sessions; family respite breaks, assisted transport, family days out, cinema & tourist attractions, specially adapted fun fair and exclusive access for disabled children.. plus much, much more...